

Oracle® Banking Enterprise Default Management

Customization Guide

Release 2.10.0.0.0

F29509-01

April 2020

Oracle Banking Enterprise Default Management Customization Guide, Release 2.10.0.0.0

F29509-01

Copyright © 2017, 2020, Oracle and/or its affiliates.

Oracle and Java are registered trademarks of Oracle and/or its affiliates. Other names may be trademarks of their respective owners.

Intel and Intel Inside are trademarks or registered trademarks of Intel Corporation. All SPARC trademarks are used under license and are trademarks or registered trademarks of SPARC International, Inc. AMD, Epyc, and the AMD logo are trademarks or registered trademarks of Advanced Micro Devices. UNIX is a registered trademark of The Open Group.

This software and related documentation are provided under a license agreement containing restrictions on use and disclosure and are protected by intellectual property laws. Except as expressly permitted in your license agreement or allowed by law, you may not use, copy, reproduce, translate, broadcast, modify, license, transmit, distribute, exhibit, perform, publish or display any part, in any form, or by any means. Reverse engineering, disassembly, or decompilation of this software, unless required by law for interoperability, is prohibited.

The information contained herein is subject to change without notice and is not warranted to be error-free. If you find any errors, please report them to us in writing.

If this is software or related documentation that is delivered to the U.S. Government or anyone licensing it on behalf of the U.S. Government, then the following notice is applicable:

U.S. GOVERNMENT END USERS: Oracle programs (including any operating system, integrated software, any programs embedded, installed or activated on delivered hardware, and modifications of such programs) and Oracle computer documentation or other Oracle data delivered to or accessed by U.S. Government end users are "commercial computer software" or "commercial computer software documentation" pursuant to the applicable Federal Acquisition Regulation and agency-specific supplemental regulations. As such, the use, reproduction, duplication, release, display, disclosure, modification, preparation of derivative works, and/or adaptation of i) Oracle programs (including any operating system, integrated software, any programs embedded, installed or activated on delivered hardware, and modifications of such programs), ii) Oracle computer documentation and/or iii) other Oracle data, is subject to the rights and limitations specified in the license contained in the applicable contract. The terms governing the U.S. Government's use of Oracle cloud services are defined by the applicable contract for such services. No other rights are granted to the U.S. Government.

This software or hardware is developed for general use in a variety of information management applications. It is not developed or intended for use in any inherently dangerous applications, including applications that may create a risk of personal injury. If you use this software or hardware in dangerous applications, then you shall be responsible to take all appropriate failsafe, backup, redundancy, and other measures to ensure its safe use. Oracle Corporation and its affiliates disclaim any liability for any damages caused by use of this software or hardware in dangerous applications.

This software or hardware and documentation may provide access to or information about content, products, and services from third parties. Oracle Corporation and its affiliates are not responsible for and expressly disclaim all warranties of any kind with respect to third-party content, products, and services unless otherwise set forth in an applicable agreement between you and Oracle. Oracle Corporation and its affiliates will not be responsible for any loss, costs, or damages incurred due to your access to or use of third-party content, products, or services, except as set forth in an applicable agreement between you and Oracle.

Contents

Preface	6
Audience	6
Documentation Accessibility	6
Organization of the Guide	6
Conventions	6
1 About this Guide	9
2 Customizing Collections and Recovery	11
2.1 Prerequisites	11
2.2 Customizing Collections and Recovery	11
2.3 Using the Oracle Banking Enterprise Collections and Oracle Banking Enterprise Recovery Installer	12
2.4 Downloading and Configuring Software and Jar Files	17
2.4.1 Downloading Eclipse	17
2.4.2 Downloading Required Jars	18
2.4.3 Configuring eclipse Project	18
2.4.4 Creating Linked Resource	23
2.4.5 Creating weblogic domain	27
2.4.6 Updating deploy.xml	28
2.4.7 Setting Variable in cmDeploy	29
2.4.8 Creating and Deploying cm.jar	31
2.4.9 Deploying SPLService, CollectionWeb and ohelp	31
2.4.10 Importing Test Project into Customization Setup	36
2.4.11 Troubleshooting JUnit	40

List of Figures

Figure 2–1 Copy SDKCommon and R_2.10.0	11
Figure 2–2 Hibernate folder	12
Figure 2–3 TEMPDIR Content	13
Figure 2–4 Config.properties	13
Figure 2–5 Config.properties	14
Figure 2–6 Silent Installation	15
Figure 2–7 Collection and Recovery Installer: Initial Details	15
Figure 2–8 Collection and Recovery Installer: Weblogic Server Details	16
Figure 2–9 Collection and Recovery Installer: Confirm Installation Details	16
Figure 2–10 Collection and Recovery Installer: Installation Complete	17
Figure 2–11 Copy Eclipse 4.4	17
Figure 2–12 Create Workspace Folder	18
Figure 2–13 Double-click Eclipse.exe	19
Figure 2–14 Workspace Launcher	19
Figure 2–15 Project Explorer - Import	20
Figure 2–16 Select Existing Projects into Workspace	21
Figure 2–17 Browse and Locate eclipseProject	22
Figure 2–18 Import Projects - Finish	23
Figure 2–19 Linked Resources	24
Figure 2–20 New Variable asBase	24
Figure 2–21 Select Folder	25
Figure 2–22 New Variable Name and Location	26
Figure 2–23 Linked Resources - Path Variables	26
Figure 2–24 Edit setDomainEnv.cmd	27

Figure 2–25 Edit setDomainEnv.cmd	28
Figure 2–26 JTA Timeout	28
Figure 2–27 deploy.xml	29
Figure 2–28 Open External Tools Dialog	29
Figure 2–29 External Tools - asBase	30
Figure 2–30 asBase - Edit User Property	30
Figure 2–31 Artifact Generator	31
Figure 2–32 cmDeploy	31
Figure 2–33 Deploy SPLService.ear	32
Figure 2–34 Deploy CollectionWeb	33
Figure 2–35 Deploy ohelp.ear	33
Figure 2–36 Creating new User	35
Figure 2–37 Setting for new User	36
Figure 2–38 Import	37
Figure 2–39 Select Existing Projects Into Workspace	38
Figure 2–40 Select eclipseTestProject	39
Figure 2–41 Import Projects	40
Figure 2–42 VM Arguments	41

Preface

This document describes the various software and configuration options required to customize Oracle Banking Enterprise Collections and Oracle Banking Enterprise Recovery.

This preface contains the following topics:

- Audience
- Documentation Accessibility
- Organization of the Guide
- Conventions

Audience

This document is intended for the users customizing Oracle Banking Enterprise Collections and Oracle Banking Enterprise Recovery.

Documentation Accessibility

For information about Oracle's commitment to accessibility, visit the Oracle Accessibility Program website at <http://www.oracle.com/us/corporate/accessibility/index.html>.

Access to Oracle Support

Oracle customers have access to electronic support through My Oracle Support. For information, visit <http://www.oracle.com/us/corporate/accessibility/support/index.html#info> or visit <http://www.oracle.com/us/corporate/accessibility/support/index.html#trs> if you are hearing impaired.

Organization of the Guide

This document contains:

Chapter 1 About this Guide

This chapter provides details about applicability of this guide.

Chapter 2 Customizing Collections and Recovery

This chapter describes the steps to be performed to configure Collections and Recovery.

Conventions

The following text conventions are used in this document:

Convention	Meaning
Boldface	Boldface type indicates graphical user interface elements associated with an action, or terms defined in text or the glossary.
<i>Italic</i>	Italic type indicates book titles, emphasis, or placeholder variables for which you

Convention	Meaning
	supply particular values.
Monospace	Monospace type indicates commands within a paragraph, URLs, code in examples, text that appears on the screen, or text that you enter.

1 About this Guide

This guide is applicable for the following products:

- Oracle Banking Platform (Oracle Banking Collections and Oracle Banking Recovery)
- Oracle Banking Enterprise Default Management (Oracle Banking Enterprise Collections and Oracle Banking Enterprise Recovery)

References to Oracle Banking Platform or OBP in this guide apply to all the above mentioned products.

2 Customizing Collections and Recovery

This chapter describes the steps to be performed to configure Oracle Banking Enterprise Collections and Oracle Banking Enterprise Recovery.

2.1 Prerequisites

Following are the prerequisites:

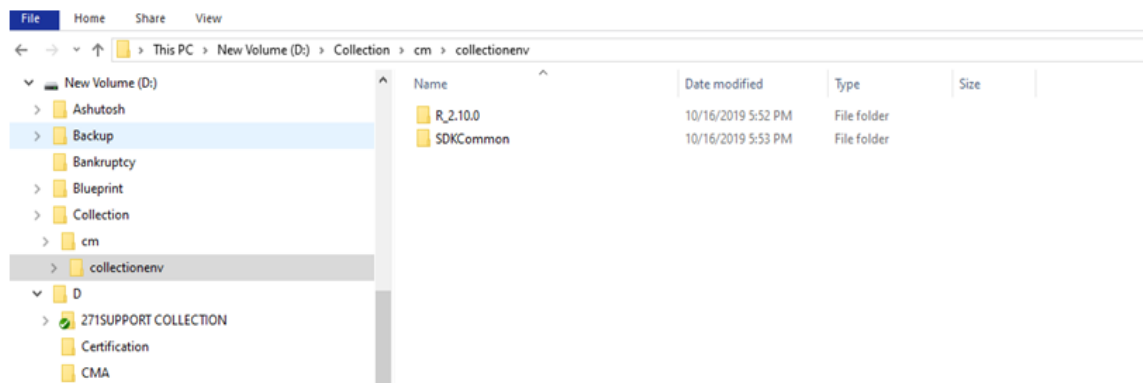
- Jdk1.8 178 bit is installed
- Weblogic Server 12.2.1.3.0 is installed

2.2 Customizing Collections and Recovery

To customize Oracle Banking Enterprise Collections and Oracle Banking Enterprise Recovery:

1. Download **CollectionSDK.rar** from the following location:
<http://edelivery.oracle.com/>
2. Make an installation directory(Example used in the document is D:\Collection\cm).
3. Make collectionenv directory in installation directory.
4. Unzip the CollectionSDK.rar on your D: drive.
5. Copy the **SDKCommon** and **R_2.10.0** folders to <installationDirectory>/collectionenv.

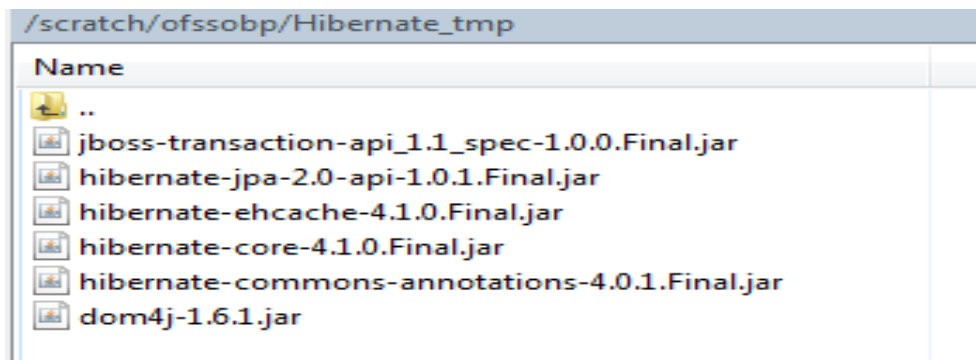
Figure 2–1 Copy SDKCommon and R_2.10.0



6. Download hibernate-release-4.1.0.Final.zip from below link.
<http://sourceforge.net/projects/hibernate/files/hibernate4/>
7. Create a hibernate directory at D:/Collection and follow the below steps:
 - a. Extract downloaded hibernate-release-4.1.0.Final.zip package in D: drive.
 - b. Copy below jars from extracted hibernate-release-4.1.0/lib/required folder to created hibernate path.

- i. hibernate-commons-annotations-4.0.1.Final.jar
 - ii. hibernate-core-4.1.0.Final.jar
 - iii. hibernate-jpa-2.0-api-1.0.1.Final.jar
 - iv. jboss-transaction-api_1.1_spec-1.0.0.Final.jar
 - v. dom4j-1.6.1.jar
- c. Copy below jar from extracted hibernate-release-4.1.0/ lib/optional/ehcache folder to create hibernate path.
- i. hibernate-ehcache-4.1.0.Final.jar

Figure 2–2 Hibernate folder



2.3 Using the Oracle Banking Enterprise Collections and Oracle Banking Enterprise Recovery Installer

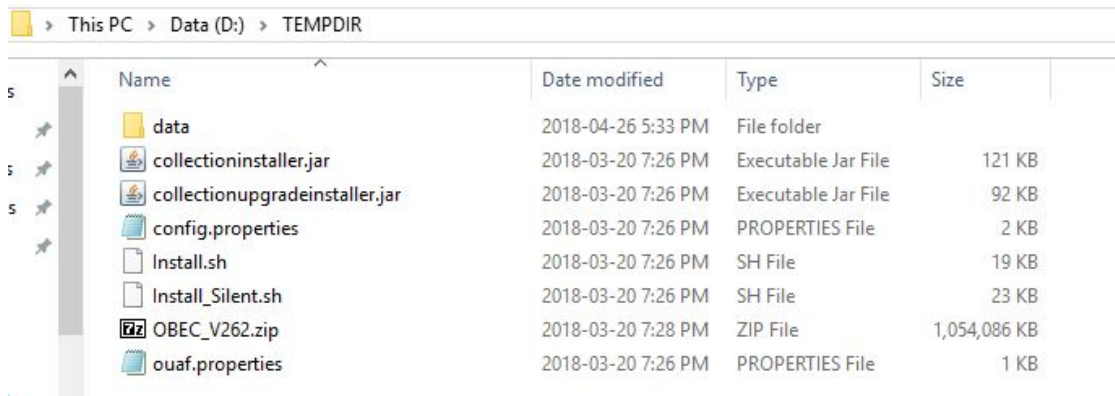
To use Installer for customization setup:

1. Download the Installer from the following location:
<http://edelivery.oracle.com/>
2. Copy the Oracle Banking Enterprise Collections and Oracle Banking Enterprise Recovery 2.10.0.0.0 installation package, `Collection_V[Build_Number].zip`, which you have downloaded from the edelivery to a TEMP location.
3. Extract the zip.
4. Uncompress the `Collection_V[Build_Number].zip` file using the following command:

```
cd <PATH>/TEMPDIR unzip Collection_V[Build_Number].zip
```

Where, `<PATH>` is the path where the TEMPDIR folder is located.

The contents of the zip file are extracted in the TEMPDIR folder.

Figure 2–3 TEMPDIR Content


Name	Date modified	Type	Size
data	2018-04-26 5:33 PM	File folder	
collectioninstaller.jar	2018-03-20 7:26 PM	Executable Jar File	121 KB
collectionupgradeinstaller.jar	2018-03-20 7:26 PM	Executable Jar File	92 KB
config.properties	2018-03-20 7:26 PM	PROPERTIES File	2 KB
Install.sh	2018-03-20 7:26 PM	SH File	19 KB
Install_Silent.sh	2018-03-20 7:26 PM	SH File	23 KB
OBEC_V262.zip	2018-03-20 7:28 PM	ZIP File	1,054,086 KB
ouaf.properties	2018-03-20 7:26 PM	PROPERTIES File	1 KB

5. Change the `IS_DEV_ENV` property in `config.properties` to `True`.

Figure 2–4 Config.properties


```

config.properties - Notepad
File Edit Format View Help
IS_DEV_ENV=true
OBP_HOST_LIB=ob.host.app/ob.app.host.coll/APP-INF/11b
OBP_THIRDPARTY_LIB=ob.host.app/ob.app.host.tp/APP-INF/11b
IS_UI_ENABLED=Y
#TNTTTΔI ΔFTΔTI ΔI

```

6. Installer operates in two modes, go with either mode.
 - Silent mode
 - a. Update `config.properties` in the `TEMPDIR` directory, set:


```

OPERATING_SYSTEM=Windows
IS_UI_ENABLED=N
HOST_CONFIG=N
UI_CONFIG=N
BATCH_CONFIG=N
CUSTOM_SUPPORT=Y
THREADPOOL_CONFIG=N
              
```

- b. Also, update the below sections in config.properties file.
- DB CONFIGURATION
 - CUSTOMIZATION CONFIGURATION

Figure 2–5 Config.properties

```

OPERATING_SYSTEM=Windows
INSTALL_DIR=/scratch/app/product/fmw/obpinstall/obp
HOST_CONFIG=N
UI_CONFIG=N
BATCH_CONFIG=N
CUSTOM_SUPPORT=Y
THREADPOOL_CONFIG=N
DOMAINNAME=
#UI CONFIGURATION
UI_LOG_DIR=/scratch/app/product/fmw/obpinstall/obp/fclogs/logs
UI_IP_ADDRESS=UI_IP
UI_PORT=8001
UI_WEBLOGIC_USERNAME=weblogic
UI_WEBLOGIC_PASSWORD=password
UI_DATASOURCE=jdbc/FCBDataSource_NonXA
UI_ADMINSERVERPORT=7001
#HOST CONFIGURATION
HOST_IP_ADDRESS=HOST_IP
HOST_PORT=8001
HOST_LOG_DIR=/scratch/app/product/fmw/obpinstall/obp/fclogs/logs
JAVA_HOME=/scratch/app/product/jdk1.8.0_172
HIBERNATE_JAR_DIR=/scratch/ofssobp/Hibernate_tmp
HOST_WEBLOGIC_USERNAME=weblogic
HOST_WEBLOGIC_PASSWORD=password
HOST_DATASOURCE=jdbc/FCBDataSource_NonXA
HOST_ADMINSERVERPORT=7001
#DB CONFIGURATION
DB_IP_ADDRESS=
DB_PORT=1521
DB_SID=P26184B
DB_USERNAME=COL27
DB_PASSWORD=
#BATCH CONFIGURATION
THREADPOOL_NAME=MT
NUMBER_OF_THREADS=5
BATCH_USER=SYSUSER
BATCH_LOG_DIR=/scratch/app/product/fmw/obpinstall/obp/fclogs/logs
#THREADPOOL CONFIGURATION
WEBLOGIC_SERVER_HOME=/scratch/app/product/fmw/wlserver
RMI_PORT=2020
DOMAIN_PATH=/scratch/app/product/fmw/user_projects/domains/
DOMAIN_NAME=host_domain
CLUSTER_NAME=IUT2
CLUSTER_MULTICAST_LISTNER_IP_ADDRESS=232.0.0.1
CLUSTER_MULTICAST_LISTNER_PORT=6660
TARGETTYPE=2
TARGETJMSERVER=obphost_cluster1
#CUSTOMIZATION CONFIGURATION
CM_INSTALL_DIR=D:/Collection/cm
CM_WLS_HOME_DIR=D:/server/wls12213
CM_LOG_DIR=D:/Collection/cm/logs
CM_HIBERNATE_DIR=D:/Collection/hibernate

```

- c. Ensure backward slashes (/) are used in path. (Eg : D:/Collection/cm)
- d. Run the executable jar (java -jar collectioninstaller.jar).

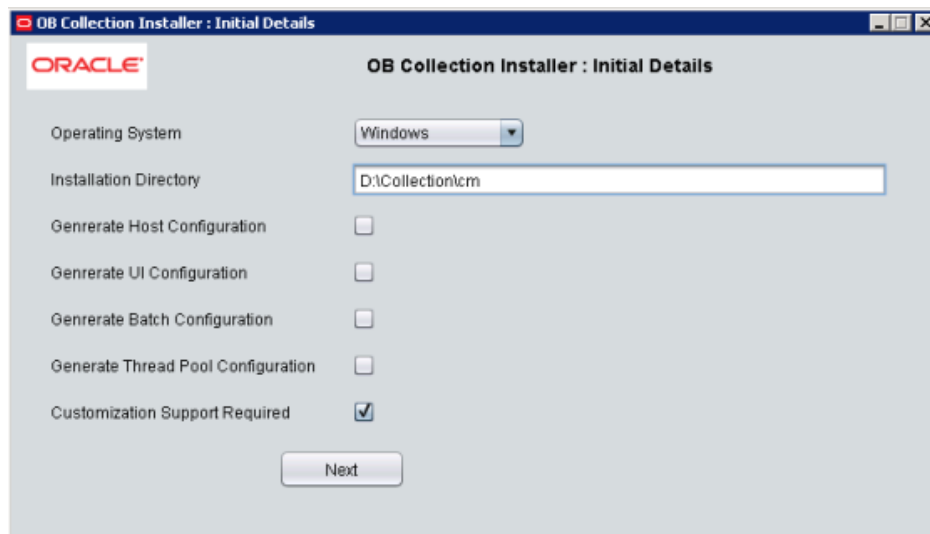
Figure 2–6 Silent Installation

```

Administrator: C:\W
D:\Test\CMInstaller\OBEC_U270\OBEC_U270>java -jar collectionInstaller.jar
Creating directory structure.
Creating directory structure successful.
Extracting OAAF libs
Extracting OAAF Successful
Copying Customization files libs.
log4j:WARN No appenders could be found for logger (com.splwg.shared.enviro.ApplicationProperties).
log4j:WARN Please initialize the log4j system properly.
log4j:WARN See http://logging.apache.org/log4j/1.2/faq.html#noconfig for more info.
ERROR: Could not load classpath property file 'spl.properties'
Cleanup of extracted files.
U75597-01.zipCleanup of extracted files successful.
Installation successful!
D:\Test\CMInstaller\OBEC_U270\OBEC_U270>_

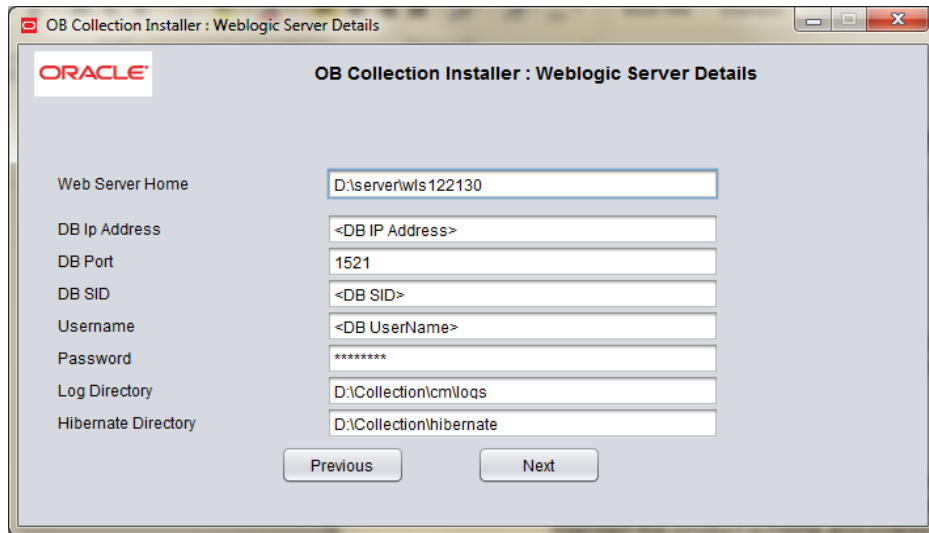
```

- GUI Mode
 - a. Run the executable jar (java -jar collectioninstaller.jar). The Installer opens.
 - b. In the Initial Details dialog box, enter the **Installation Directory** as *D:\Collection\cm* as the location where it is to be installed.

Figure 2–7 Collection and Recovery Installer: Initial Details

- c. Select the **Customization Support Required** checkbox.
- d. Click **Next**.

Figure 2–8 Collection and Recovery Installer: Weblogic Server Details



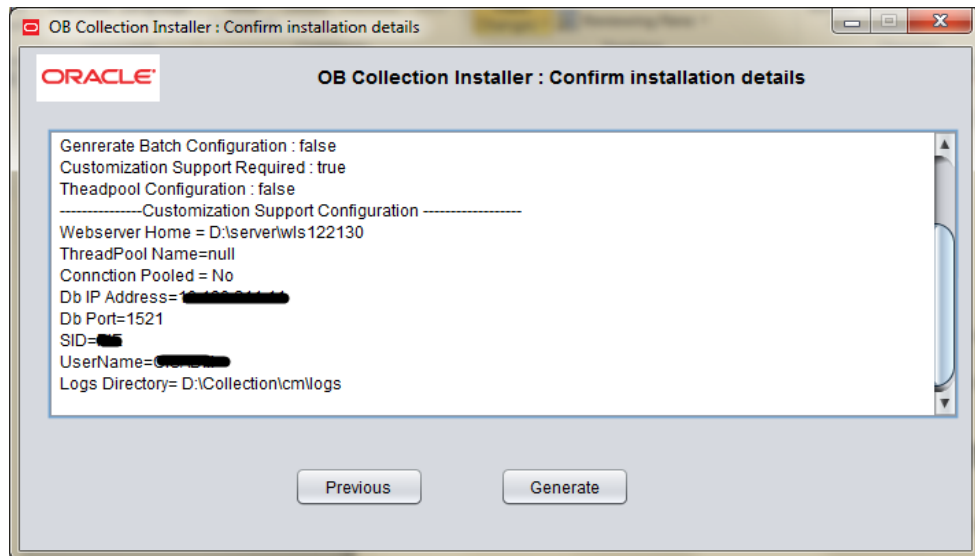
- e. In Server Details dialog box, enter required details and click **Next**.

Web Server Home: Path to the Weblogic home directory (Example : D:\server\wls122130)

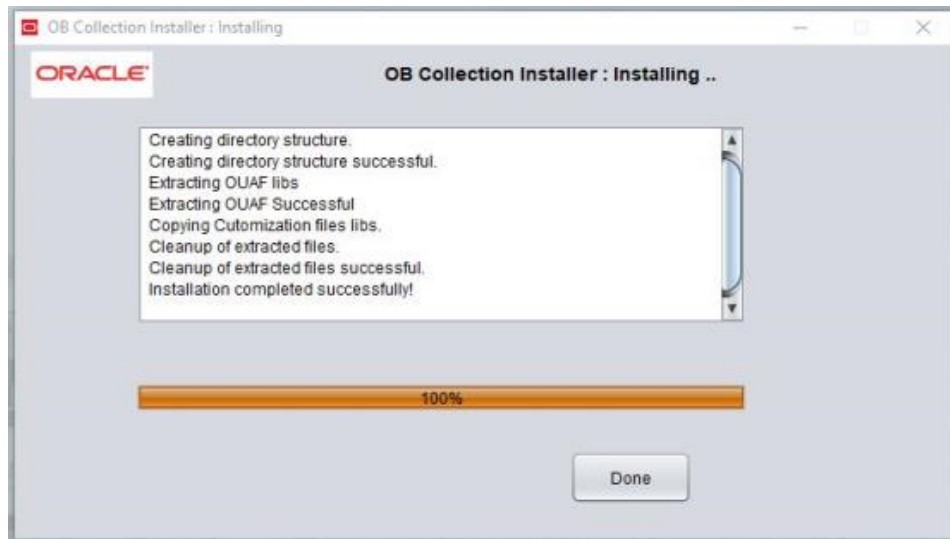
Username/Password: Credentials of the DB

- f. Click **Generate**.

Figure 2–9 Collection and Recovery Installer: Confirm Installation Details



- g. Click **Done**.

Figure 2–10 Collection and Recovery Installer: Installation Complete

2.4 Downloading and Configuring Software and Jar Files

This section provides information on downloading and configuring the requisite software and jar files.

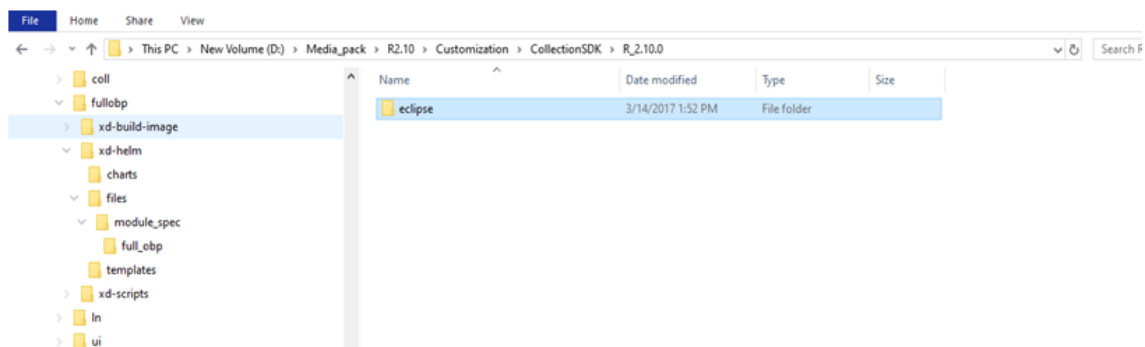
2.4.1 Downloading Eclipse

To download Eclipse:

1. Download Eclipse Neon from the following location:
http://www.eclipse.org/downloads/download.php?file=/technology/epp/downloads/release/neon/3/eclipse-java-neon-3-win32-x86_64.zip
2. Copy the downloaded Eclipse folder to the R_2.10.0 folder.
3. Copy Plugins from SDKCommon to Eclipse plugin folder.

From location : \SDKCommon\plugins

To location : \R_2.10.0\Eclipse\plugins

Figure 2–11 Copy Eclipse 4.4

2.4.2 Downloading Required Jars

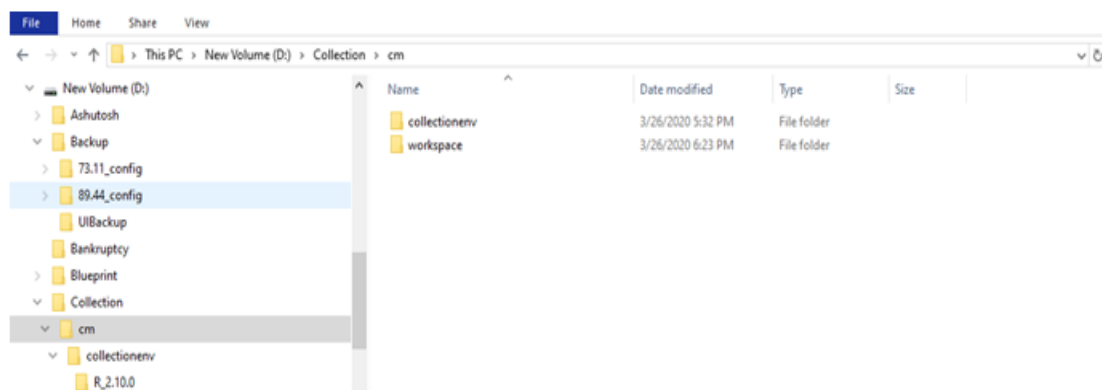
1. Download json-rpc jar from the following url:<https://mvnrepository.com/artifact/com.metaparadigm/json-rpc/1.0>
2. Copy the jar file to the following location:
 \SDKCommon\tools

2.4.3 Configuring eclipse Project

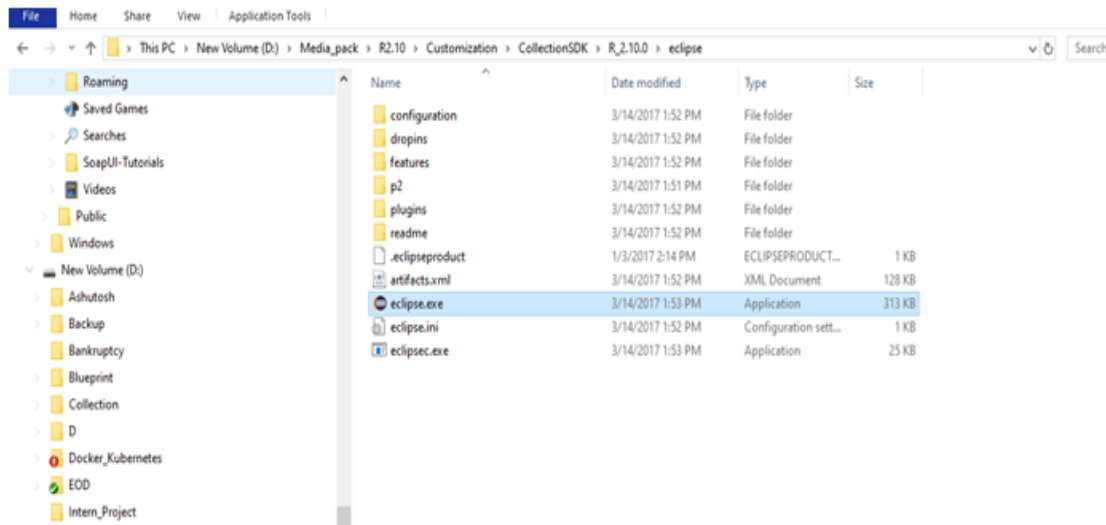
To select and configure eclipse Project:

1. Create a new folder named **Workspace** where you have installed the environment.

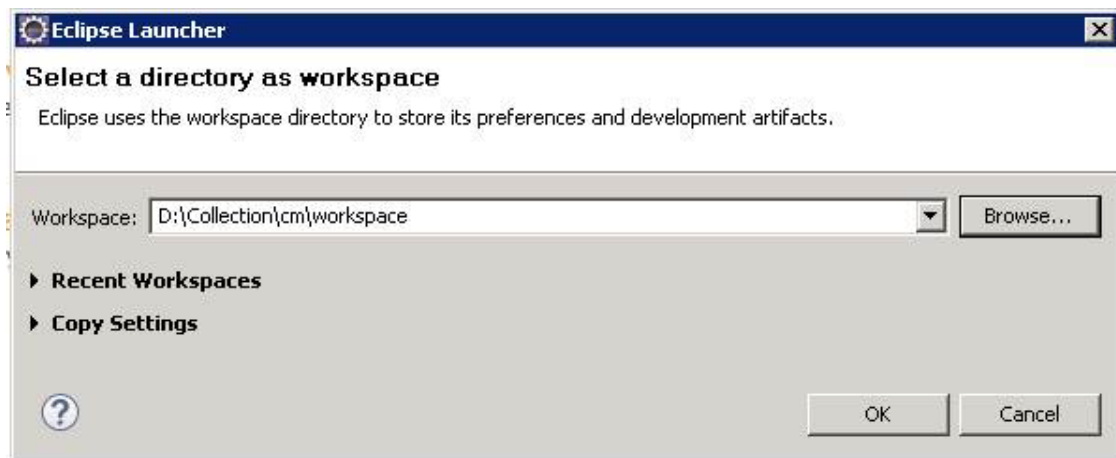
Figure 2–12 Create Workspace Folder



2. Navigate to the following location:
D:\Collection\cm\collenctionenv\R_2.10.0\eclipse
3. Double-click **Eclipse.exe**.

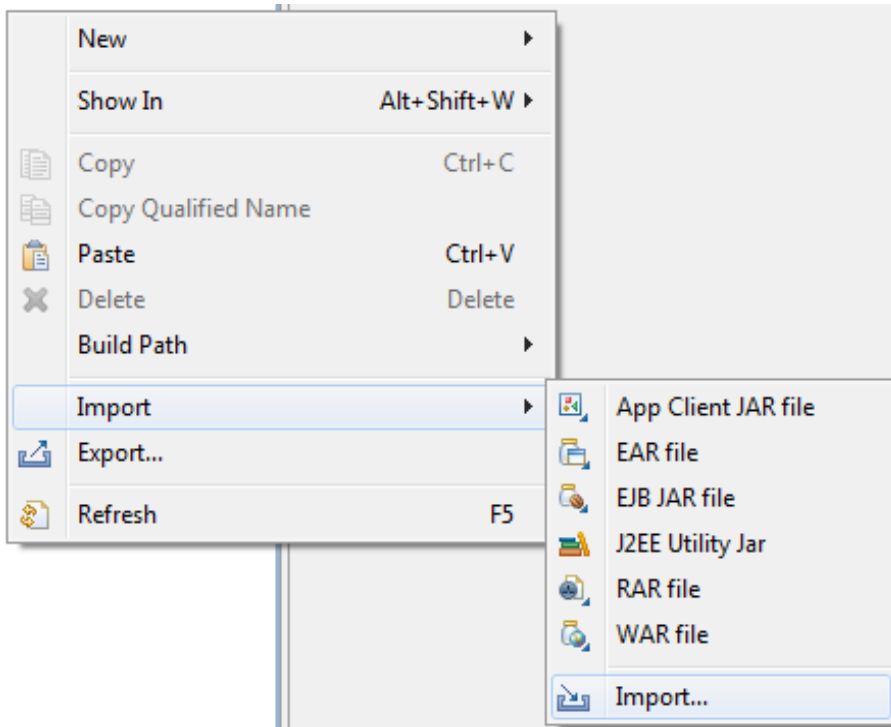
Figure 2–13 Double-click Eclipse.exe

4. In the Workspace Launcher dialog box, click **Browse**, and locate the path where you have created workspace folder.

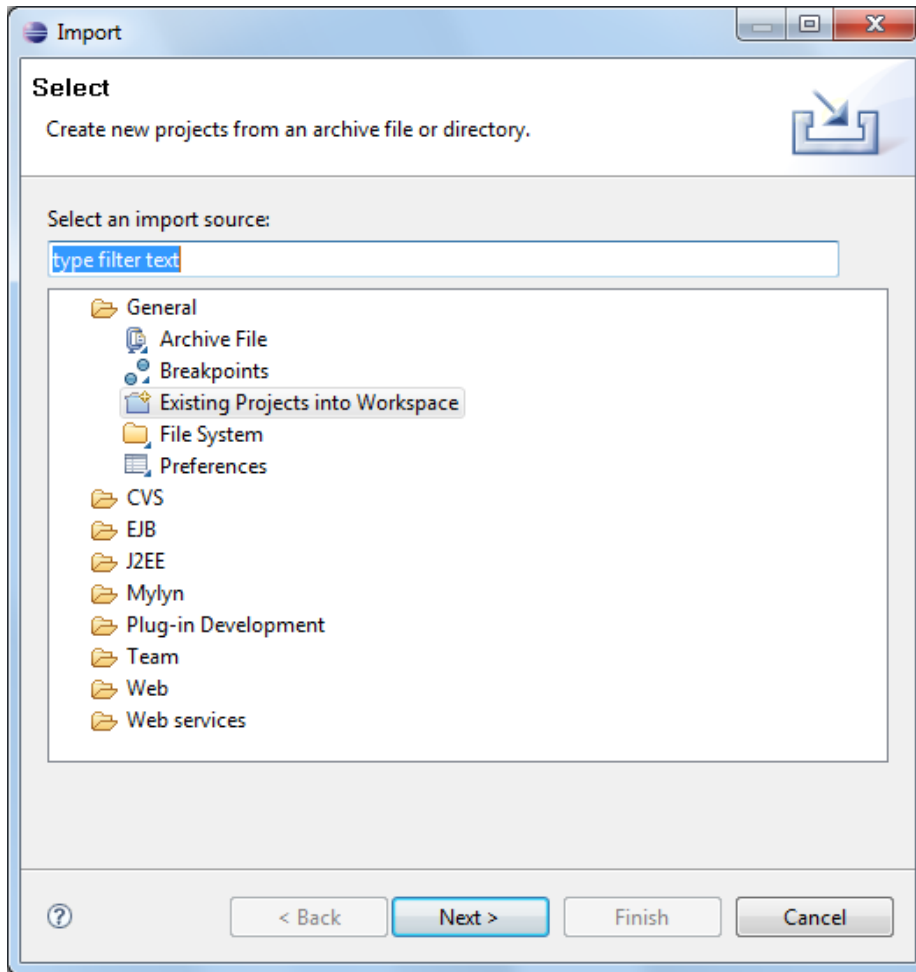
Figure 2–14 Workspace Launcher

5. Click **OK**.
6. Right-click the Project Explorer, and select **Import** → **Import**.

Figure 2–15 Project Explorer - Import



7. In the Import dialog box, select the **Existing Projects into Workspace** option.

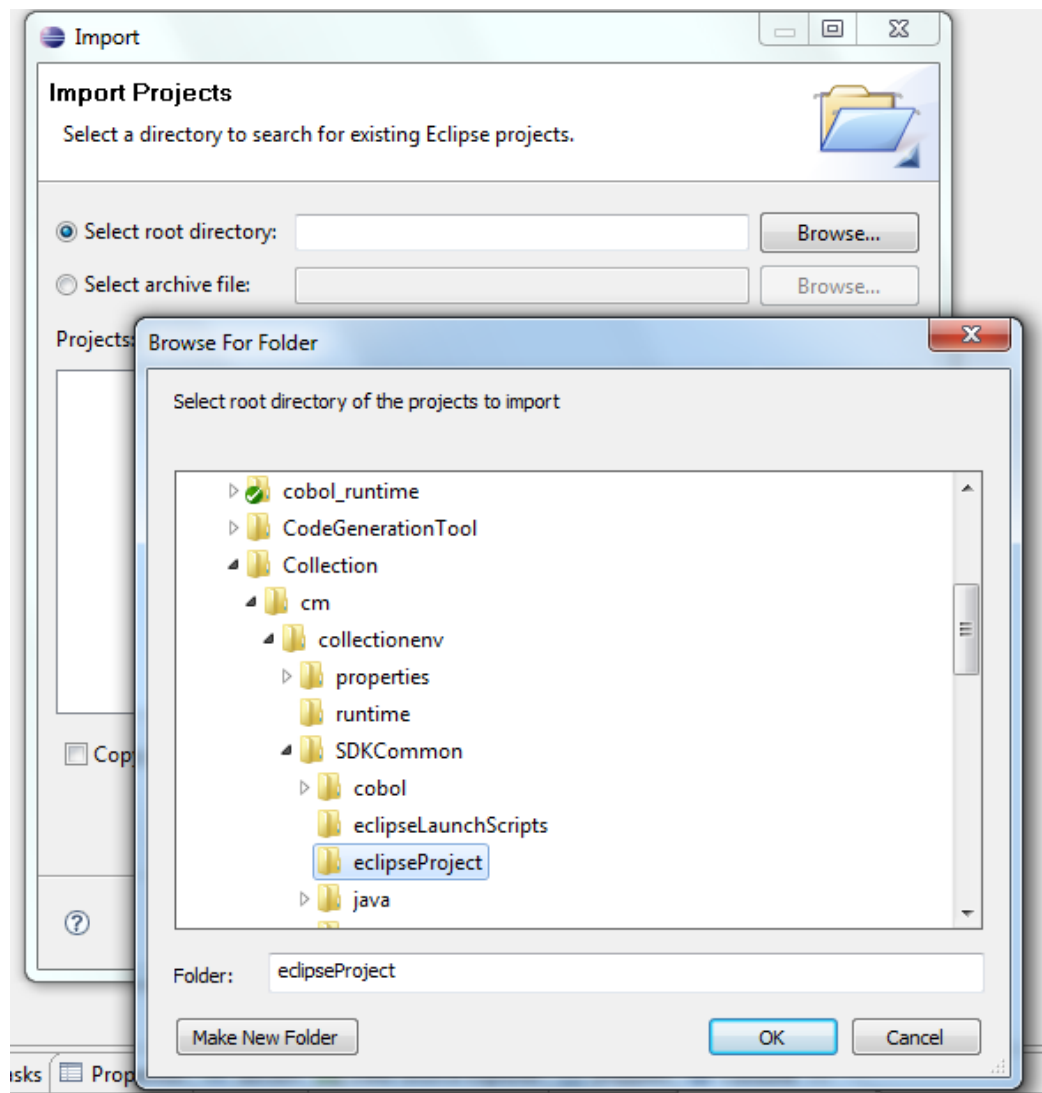
Figure 2–16 Select Existing Projects into Workspace

8. Click **Next**.
9. In the Import dialog box, select **Select root directory** option, and click **Browse**.
10. In the **Browse For Folder**, select **eclipseProject**.

You can locate the eclipseProject at:

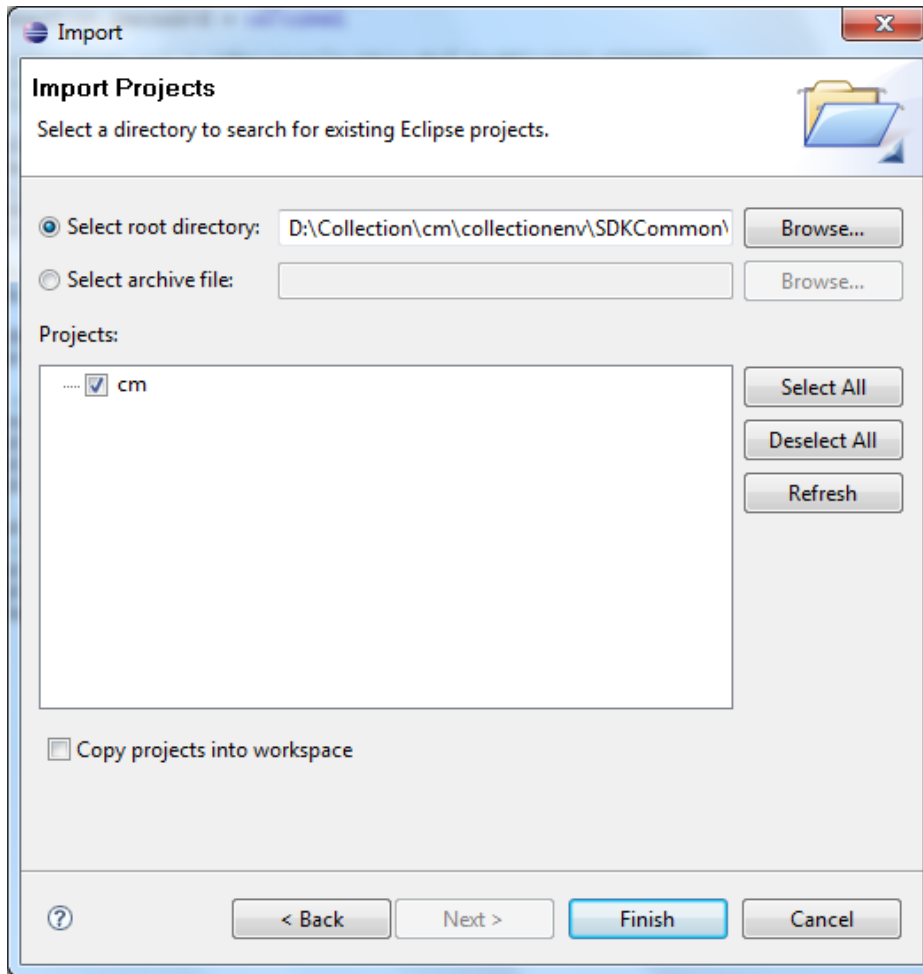
{Collection Environment Directory}\SDKCommon\eclipseProject

Figure 2–17 Browse and Locate eclipseProject



11. Click **OK**.
12. In the Import dialog box, click **Finish**.

Figure 2–18 Import Projects - Finish

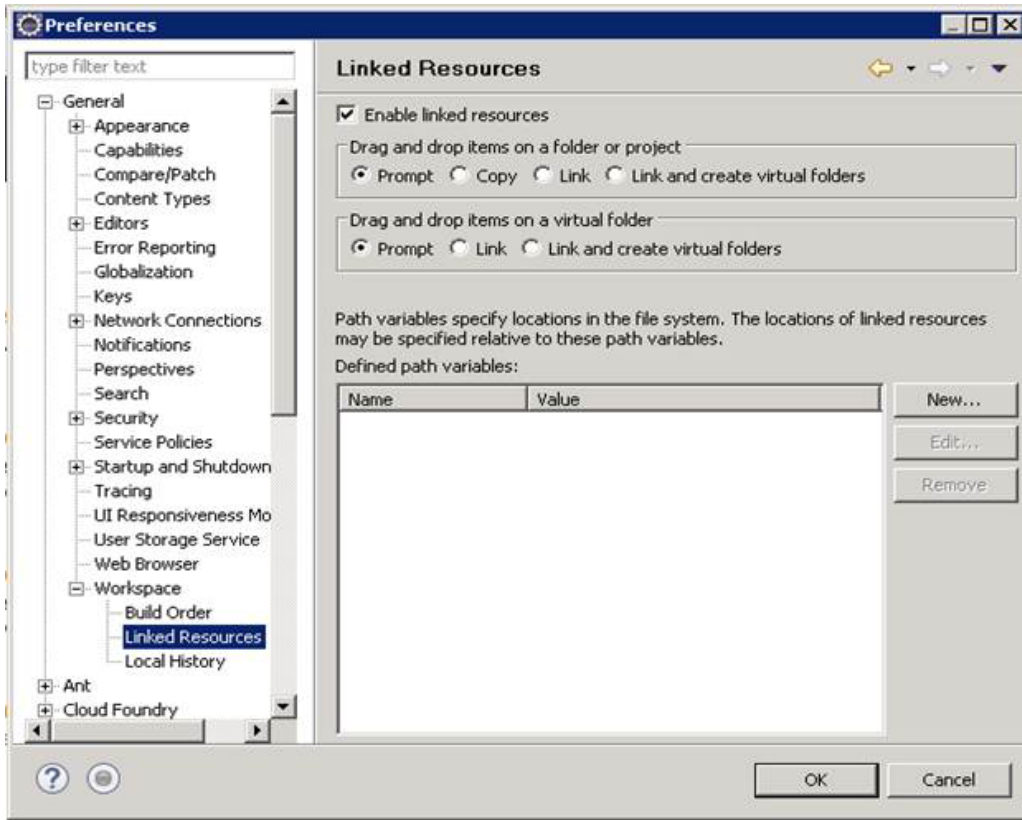


2.4.4 Creating Linked Resource

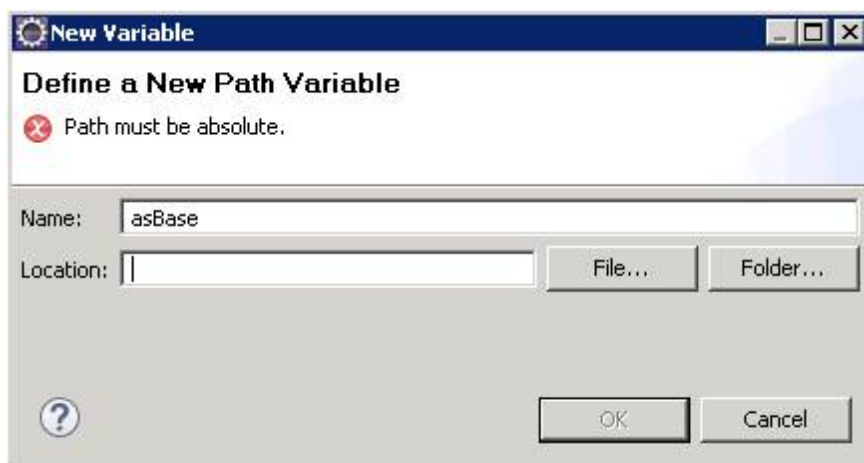
To create linked resource:

1. Navigate to **Window** → **Preferences**.
2. In the **Preferences** dialog box, go to **General** → **Workspace** → **Linked Resource**.

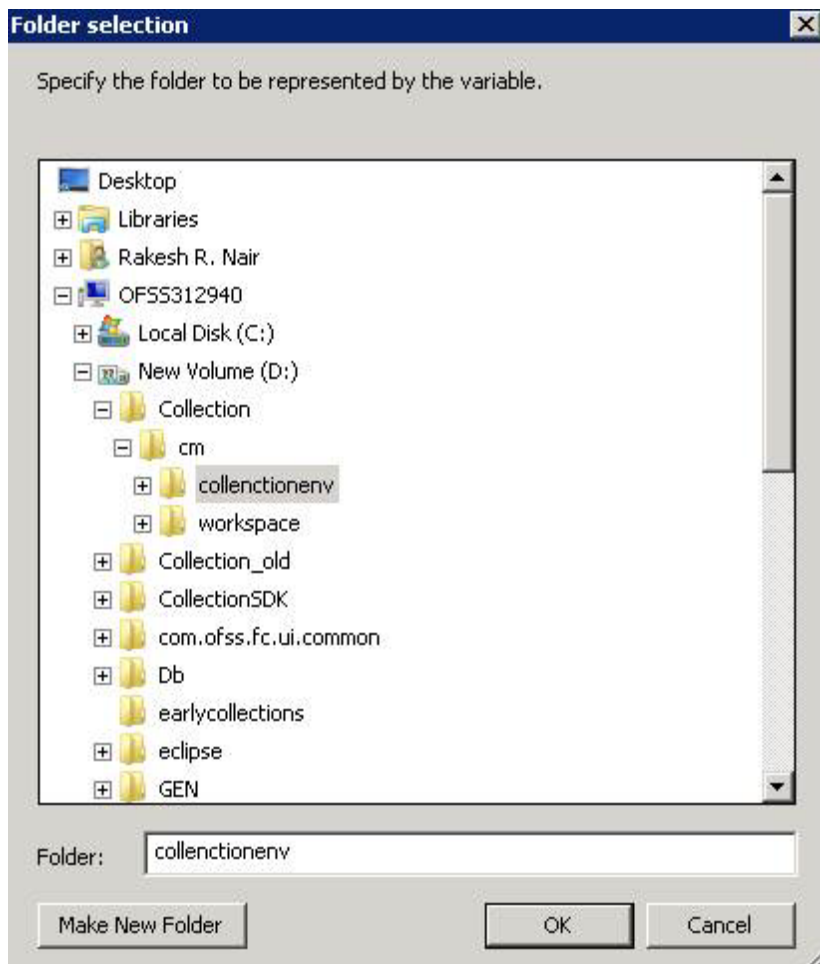
Figure 2–19 Linked Resources



3. Click **New**.
4. In the **New Variable** dialog box, type `asBase` in the **Name** field.

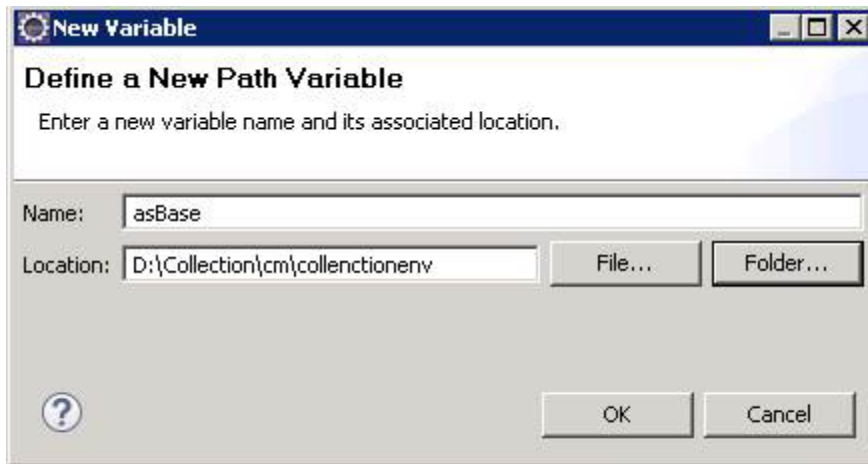
Figure 2–20 New Variable `asBase`

5. To specify location, click **Folder** and select the location where you have installed the environment.

Figure 2–21 Select Folder

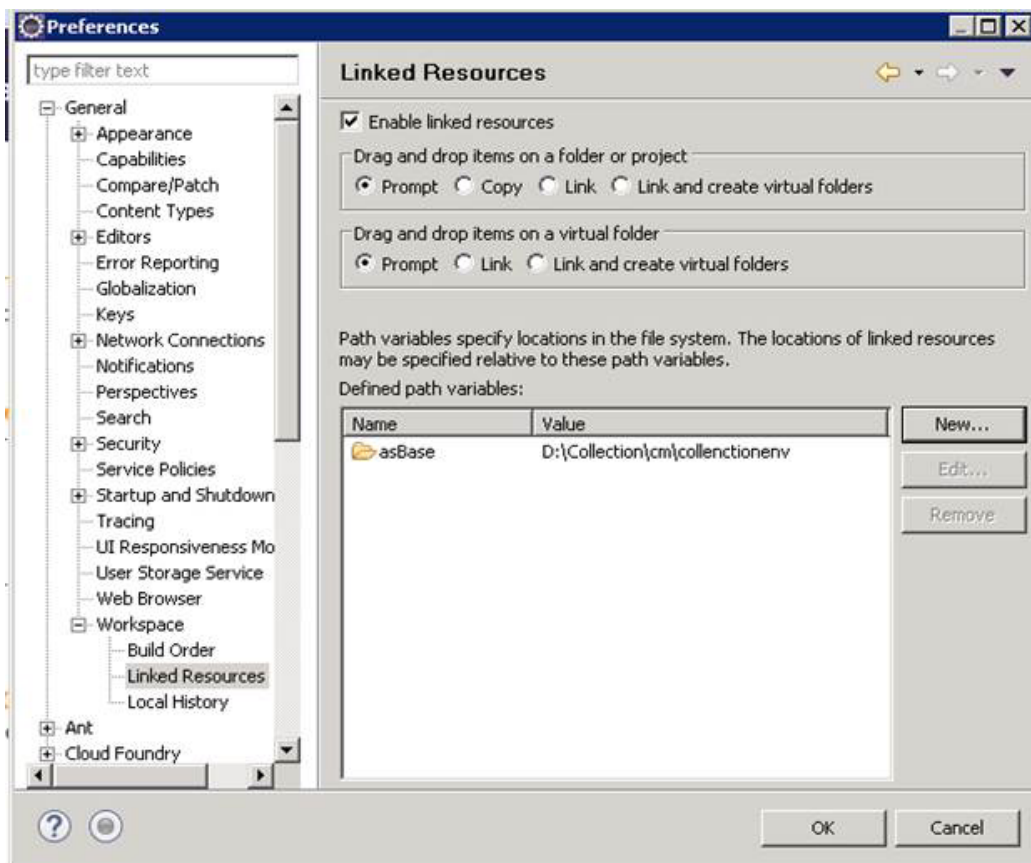
6. Click **OK**. The new variable name and location is set.

Figure 2–22 New Variable Name and Location



7. Click **OK**.

Figure 2–23 Linked Resources - Path Variables



8. Click **OK**.

9. Refresh project.

2.4.5 Creating weblogic domain

This section provides information on creating a new weblogic domain.

1. Open the weblogic installation directory.
2. Execute `wlstpy.cmd`.
3. New domain `<weblogic_root>/user_projects/domains/cm_domain` will be generated.
4. Remove jar `cglib.cglib-noddep.jar` from the location `<weblogic_root>/wlserver/modules`.
5. Edit `<weblogic_root>/user_projects/domains/cm_domain/setDomainEnv.cmd`
 - a. Search for `@REM IF USER_MEM_ARGS`
 - b. Add below line next to it
6. Set `USER_MEM_ARGS=-Xms128m -Xmx3072m %MEM_DEV_ARGS% %MEM_MAX_PERM_SIZE%`

Figure 2–24 Edit `setDomainEnv.cmd`

```

5         call "%DOMAIN_HOME%\bin\setStartupEnv.cmd"
6     )
7 )
8
9 @REM Set user overrides, if available.
10
11 if exist %DOMAIN_HOME%\bin\setUserOverrides.cmd (
12     call "%DOMAIN_HOME%\bin\setUserOverrides.cmd"
13 )
14
15 @REM IF USER_MEM_ARGS the environment variable is set, use it to override ALL MEM_ARGS
16 set USER_MEM_ARGS=-Xms128m -Xmx3072m %MEM_DEV_ARGS% %MEM_MAX_PERM_SIZE%
17 if NOT "%USER_MEM_ARGS%"==" " (
18     set MEM_ARGS=%USER_MEM_ARGS%
19 )
20
21 set JAVA_PROPERTIES=-Dwls.home=%WLS_HOME% -Dweblogic.home=%WLS_HOME%

```

- a. Search for `@REM PROFILING SUPPORT`
 - b. Add below line as show in screenshot and save `setDomainEnv.cmd` file
7. Set `JAVA_OPTIONS=%JAVA_OPTIONS% -Djavax.xml.parsers.SAXParserFactory=com.sun.org.apache.xerces.internal.jaxp.SAXParserFactoryImpl`

Figure 2–25 Edit setDomainEnv.cmd

```

@REM PROFILING SUPPORT
set JAVA_PROFILE=
set SERVER_CLASS=weblogic.Server
set JAVA_PROPERTIES=%JAVA_PROPERTIES% %WLP_JAVA_PROPERTIES%
set JAVA_OPTIONS=%JAVA_OPTIONS% %JAVA_PROPERTIES%
set JAVA_OPTIONS=%JAVA_OPTIONS% -Djavax.xml.parsers.SAXParserFactory=com.sun.org.apache.xerces.internal.jaxp.SAXParserFactoryImpl
if "%PRODUCTION_MODE%"=="true" (
    set JAVA_OPTIONS= -Dweblogic.ProductionModeEnabled=true %JAVA_OPTIONS%
)

```

8. Run `<weblogic_root>/user_projects/domains/cm_domain/startWebLogic.cmd` to bring the adminserver up.
9. Open `http://localhost:7001/console` with default username/password: `weblogic/weblogic1`.
10. Open `cm_domain` -> JTA and increase the timeout seconds to 300.
11. Click Save.

Figure 2–26 JTA Timeout

Settings for cm_domain

Configuration | Monitoring | Control | Security | Web Service Security | ZDT Control | Notes

General | **JTA** | Concurrency | JPA | EJBs | Web Applications | Logging | Log Filters | Batch

Save

Use this page to define the Java Transaction API (JTA) configuration of this WebLogic Server domain.

Timeout Seconds:	300
Abandon Timeout Seconds:	86400
Before Completion Iteration Limit:	10
Max Transactions:	10000
Max Unique Name Statistics:	1000
Checkpoint Interval Seconds:	300

Write recovery logs when determiners configured

2.4.6 Updating deploy.xml

This section provides information on the various file updates required.

1. Change `deploy.xml`.
 - a. Navigate to project `cm` --> `tools` --> `deploy.xml` and open it.
 - b. Change the `asBase` variable to `{Collection Environment Directory}`.

- c. Change the **webBase** variable to **{Weblogic server root directory}**.

Figure 2–27 deploy.xml

```

46<target name="modifyCollectionWeb">
47  <delete dir="${asBase}/R_2.7/CollectionWeb" />
48  <unzip src="${asBase}/R_2.7/CollectionWeb.ear" dest="${asBase}/R_2.7/CollectionWeb" />
49  <unzip src="${asBase}/R_2.7/CollectionWeb/collectionweb.war" dest="${asBase}/R_2.7/CollectionWeb/collectionweb" />
50  <mkdir dir="${asBase}/R_2.7/CollectionWeb/collectionweb/WEB-INF/classes" />
51  <copy todir="${asBase}/R_2.7/CollectionWeb/collectionweb/WEB-INF/classes/" overwrite="true">
52    <fileset file="${asBase}/properties/web/plognore" />
53    <fileset file="${asBase}/properties/web/logd.properties" />
54    <fileset file="${asBase}/properties/web/spl.properties" />
55  </copy>
56
57  <delete dir="${asBase}/R_2.7/CollectionWeb/collectionweb.war" />
58  <war destfile="${asBase}/R_2.7/CollectionWeb/collectionweb.war" basedir="${asBase}/R_2.7/CollectionWeb/collectionweb" >
59    <manifest>
60      <attribute name="Manifest-Version" value="1.0" />
61      <attribute name="Created-By" value="1.8.0_101 (Oracle Corporation)" />
62    </manifest>
63  </war>
64  <delete dir="${asBase}/R_2.7/CollectionWeb/collectionweb" />
65  <delete dir="${asBase}/R_2.7/CollectionWeb.ear" />
66  <ear destfile="${asBase}/R_2.7/CollectionWeb.ear" basedir="${asBase}/R_2.7/CollectionWeb" update="true">
67    <manifest>
68      <attribute name="Manifest-Version" value="1.0" />
69      <attribute name="Created-By" value="1.8.0_101-b13 (Oracle Corporation)" />
70    </manifest>
71  </ear>
72  <delete dir="${asBase}/R_2.7/CollectionWeb" />
73
74</target>
75
76<target name="updateBuildServiceEar">
77  <delete dir="${asBase}/R_2.7/SPLService" />
78  <unzip src="${asBase}/R_2.7/SPLService.ear" dest="${asBase}/R_2.7/SPLService" />
79  <copy todir="${asBase}/R_2.7/SPLService/" overwrite="true">
80    <fileset file="${asBase}/R_2.7/SPLService/beans" />
81  </copy>
82  <ear destfile="${asBase}/R_2.7/SPLService.ear" basedir="${asBase}/R_2.7/SPLService" update="true">
83    <manifest>

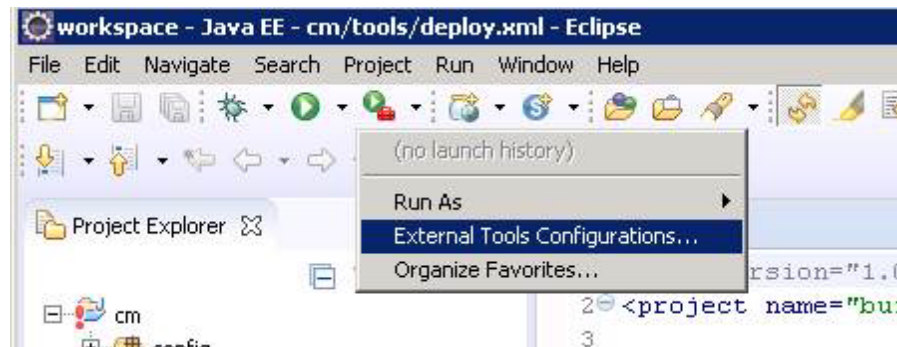
```

2.4.7 Setting Variable in cmDeploy

To set asBase variable in cmDeploy ant script:

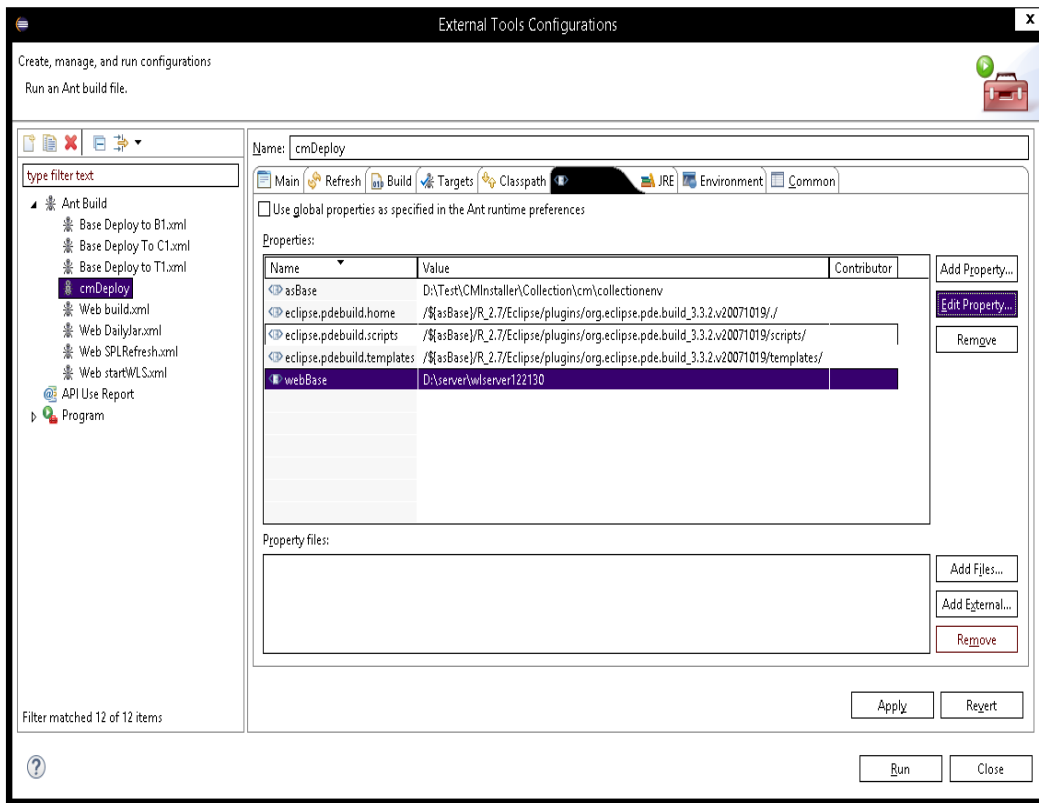
1. Navigate to **Open External Tools Dialog** by clicking Run -> External Tools -> ExternalTools Configurations.

Figure 2–28 Open External Tools Dialog



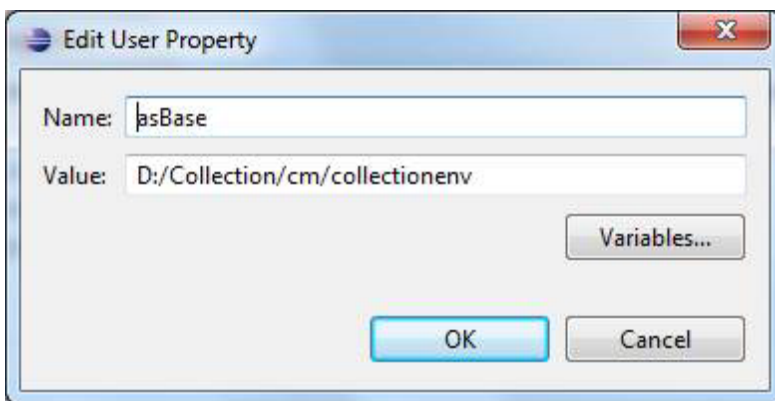
2. In the **External Tools** dialog box, select **cmDeploy** and edit asBase and webBase property.

Figure 2–29 External Tools - asBase



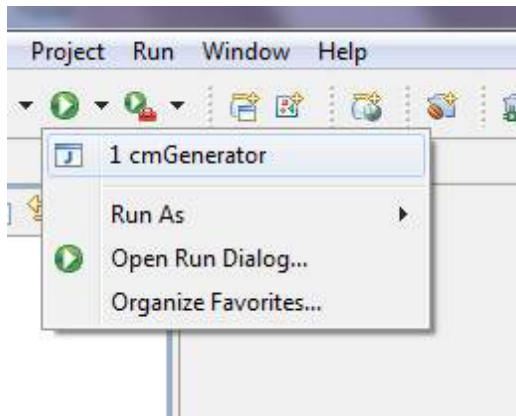
3. Click **Edit Property** and specify the path where you have installed collection environment.

Figure 2–30 asBase - Edit User Property



4. Click **Ok** and apply.
5. Run the artifact generator to ensure that the setup runs correctly.

Figure 2–31 Artifact Generator

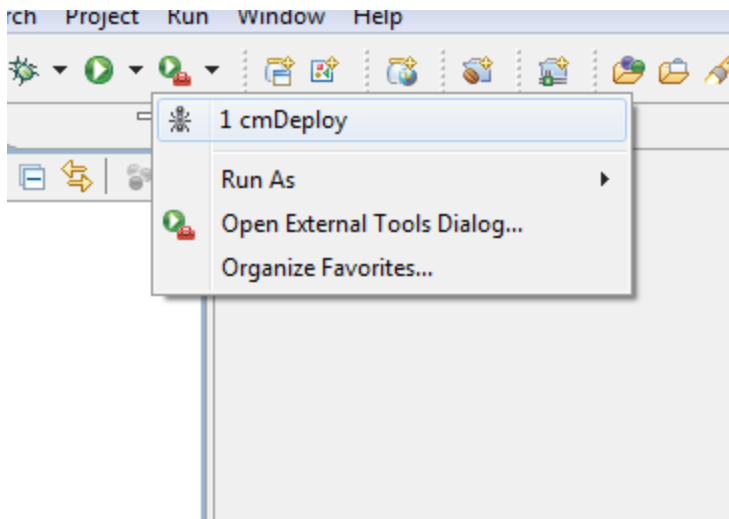


2.4.8 Creating and Deploying cm.jar

To create and deploy cm.jar:

1. Create cm.jar and SPLService.ear using cmDeploy Ant script.

Figure 2–32 cmDeploy



After you run the ant script, cm.jar is created at following location:

{Your collection environment}\standalone\lib\cm.jar

2.4.9 Deploying SPLService, CollectionWeb and ohelp

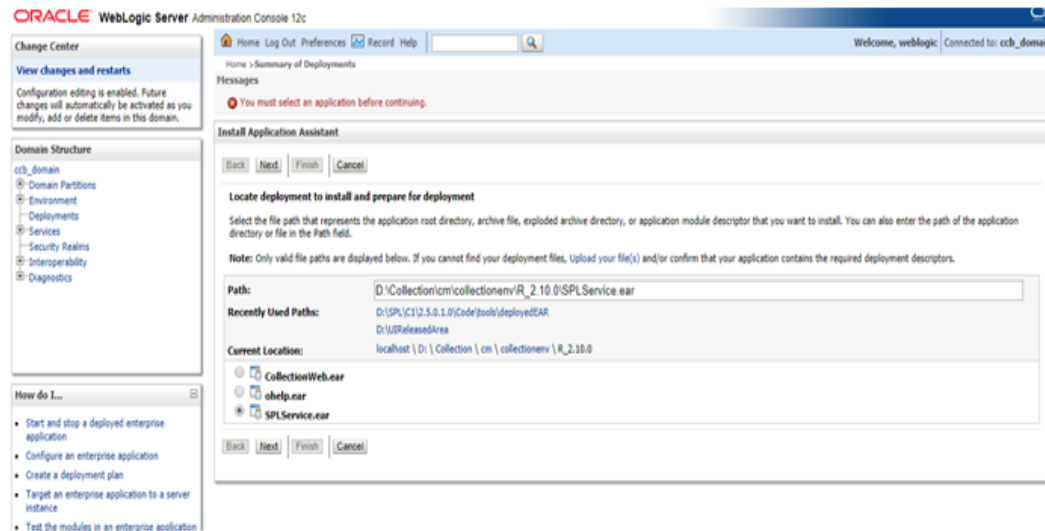
Deploy the CollectionWeb application to the newly created domain.

1. Stop weblogic server using below command :
 - a. `cd <Insatllation Directory>/user_projects/domains/cm_domain/bin`
 - b. `stopWeblogic.cmd`
2. Open `http://localhost:7001/console` with default username/password: `weblogic/weblogic1`

Step 1 Deploy SPLService.ear

1. Navigate to **Deployments -> Install**
2. Specify SPLService.ear path :
<Insatllation Directory>/ collectionenv/R_2.10.0

Figure 2–33 Deploy SPLService.ear

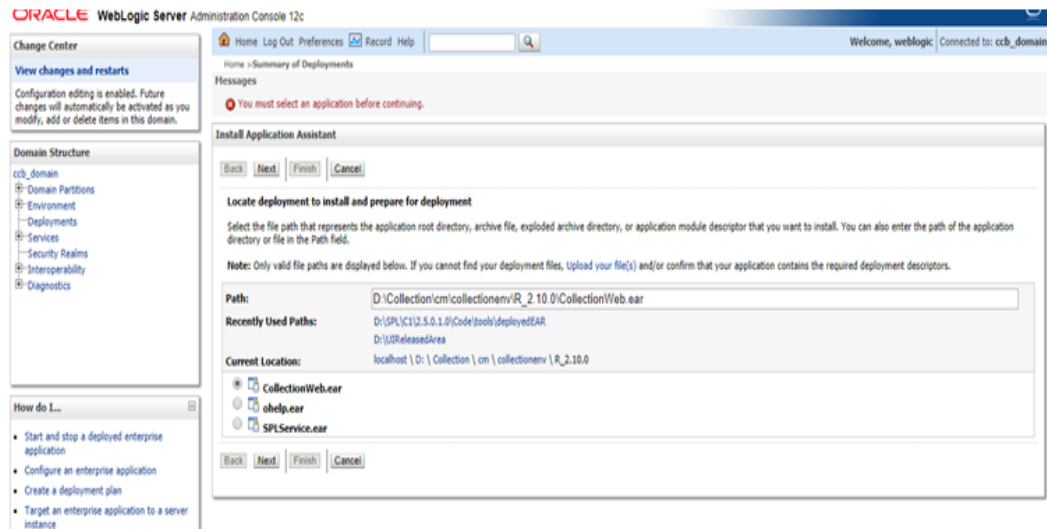


3. Select **SPLService.ear** ->Install as Application
4. Click **Next** -> **Finish**
5. **Default Deployment Order: 100**
6. Click **Save**

Step 2 Deploy CollectionWeb.ear

1. Navigate to **Deployments -> Install**
2. Specify CollectionWeb.ear path:
<Insatllation Directory>/collectionenv/R_2.10.0/

Figure 2–34 Deploy CollectionWeb

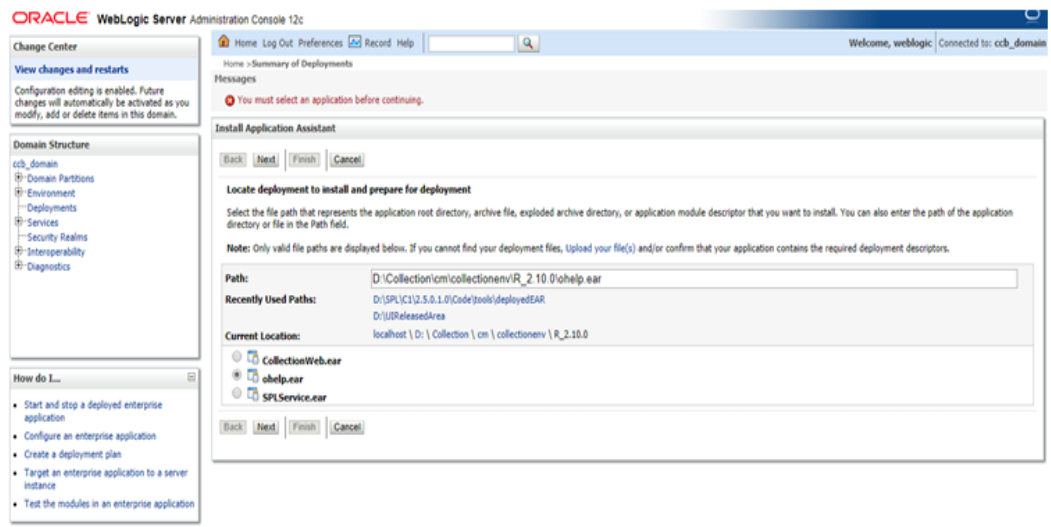


3. Select **CollectionWeb.ear**
4. Click **Next** -> **Finish**
5. **Set Deployment Order: 200**
6. Click **Save**

Step 3 Deploying ohelp.ear

1. Navigate to **Deployments** -> **Install**
2. Specify SPLService.ear path :
<Installation Directory>/collectionenv/R_2.10.0/

Figure 2–35 Deploy ohelp.ear



3. Select **ohelp.ear**
4. Click **Next -> Finish**
5. **Set Deployment Order: 300**
6. Click **Save**

Step 4 Checking State of above deployments

1. Navigate to **Deployment -> Install**
2. You can see State of both deployment will be Active.

Step 5 Configure User:

1. Open <http://localhost:7001/console>
2. Navigate to **Security Realms -> myrealm**
3. Open **User and Groups panel -> Groups -> new**
4. Create new group **cisuser** as shown below:
5. Click **OK**
6. Navigate to **Users panel -> new**
7. Create new user **sysuser** as shown below:

8. Associate password for user (For eg. welcome1).

Figure 2–36 Creating new User

Create a New User

OK | Cancel

User Properties

The following properties will be used to identify your new User.
* Indicates required fields

What would you like to name your new User?

* **Name:**

How would you like to describe the new User?

Description:

Please choose a provider for the user.

Provider:

The password is associated with the login name for the new User.

* **Password:**

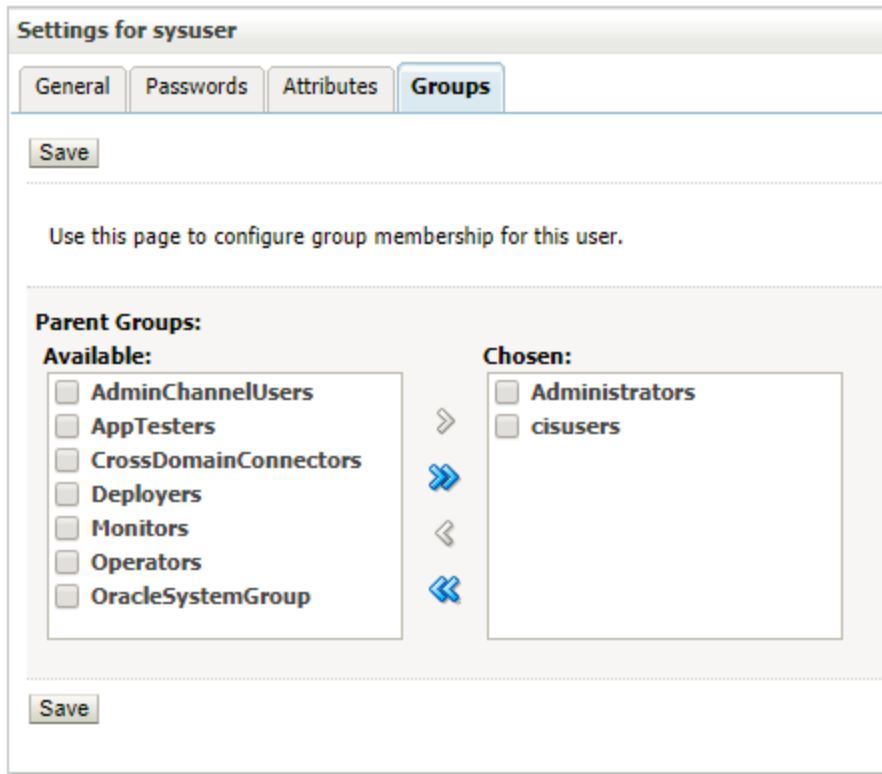
* **Confirm Password:**

OK | Cancel

9. Click **OK**
10. Click on **sysuser** -> **Groups**

11. Select **Administrator** and **cisuser** and move to right as shown below:

Figure 2–37 Setting for new User



12. Click **Save**

Step 6 Open Admin Screen:

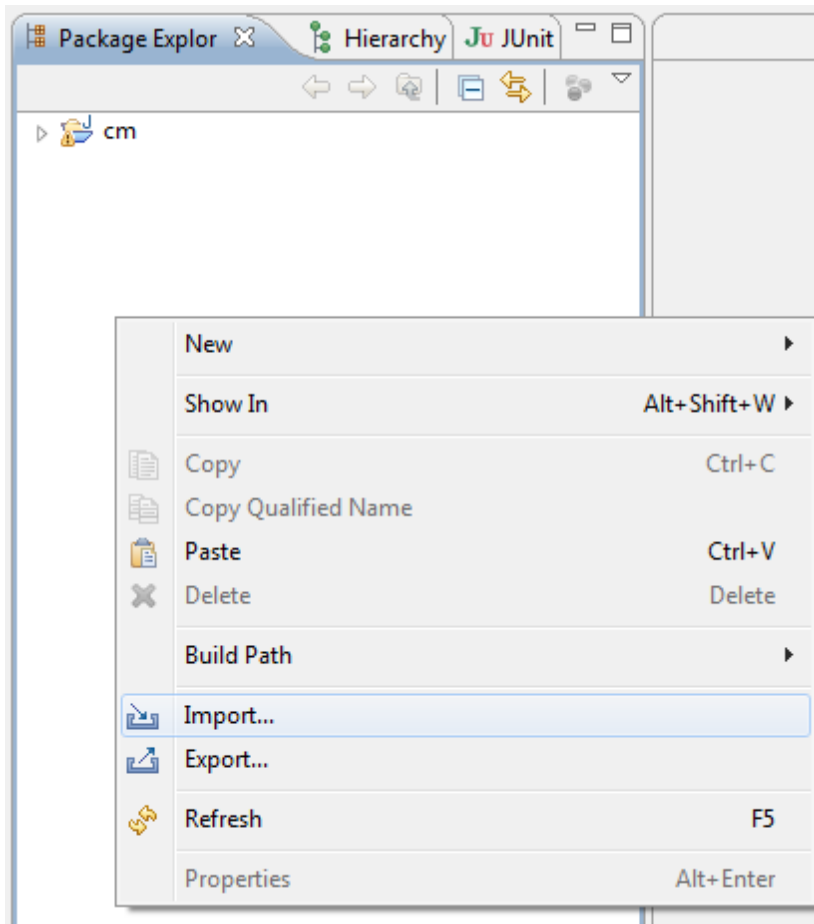
1. <http://localhost:7001/CollectionAdmin>.
2. Login using **sysuser** and **password** associated to user.

2.4.10 Importing Test Project into Customization Setup

To import Test Project into customization setup:

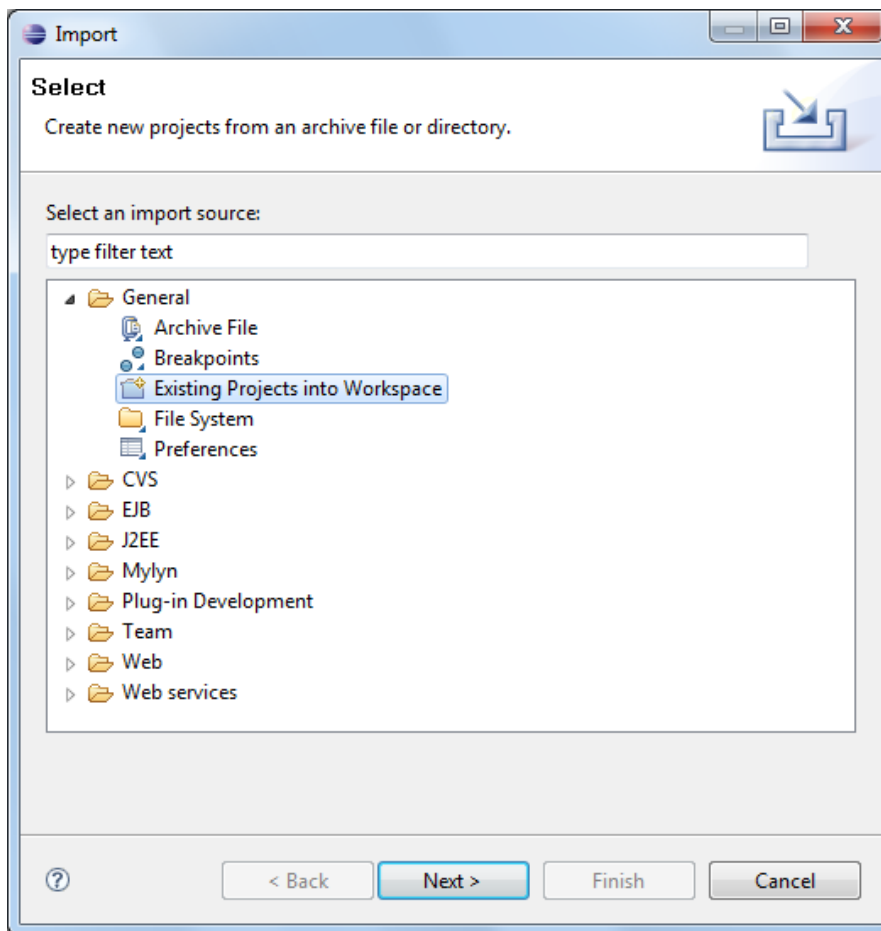
1. Right-click **Project Explorer**, and select **Import**.

Figure 2–38 Import

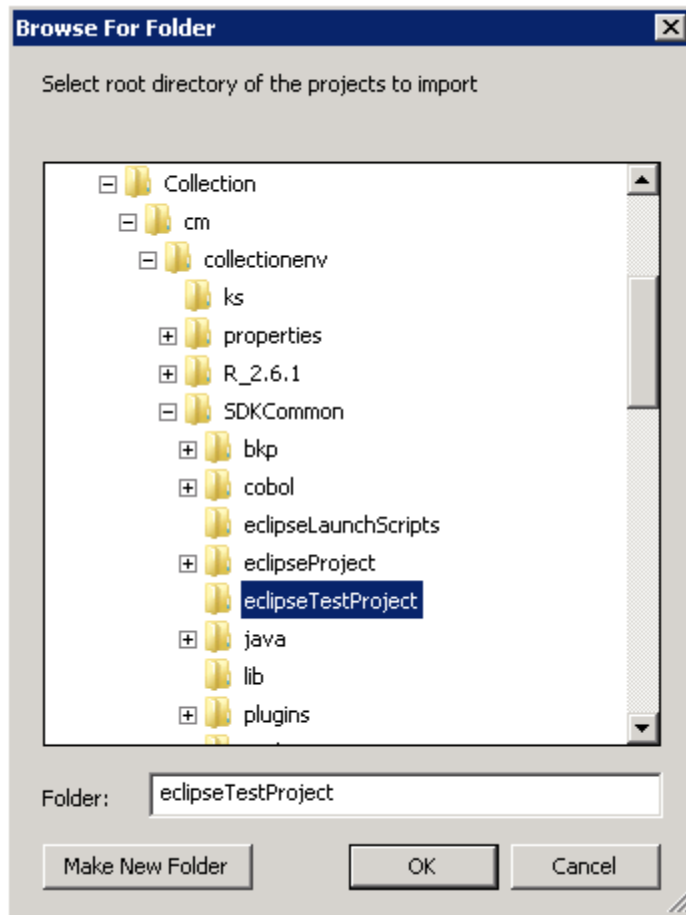


2. In the **Import** dialog box, select **Existing Projects into Workspace**.

Figure 2–39 Select Existing Projects Into Workspace

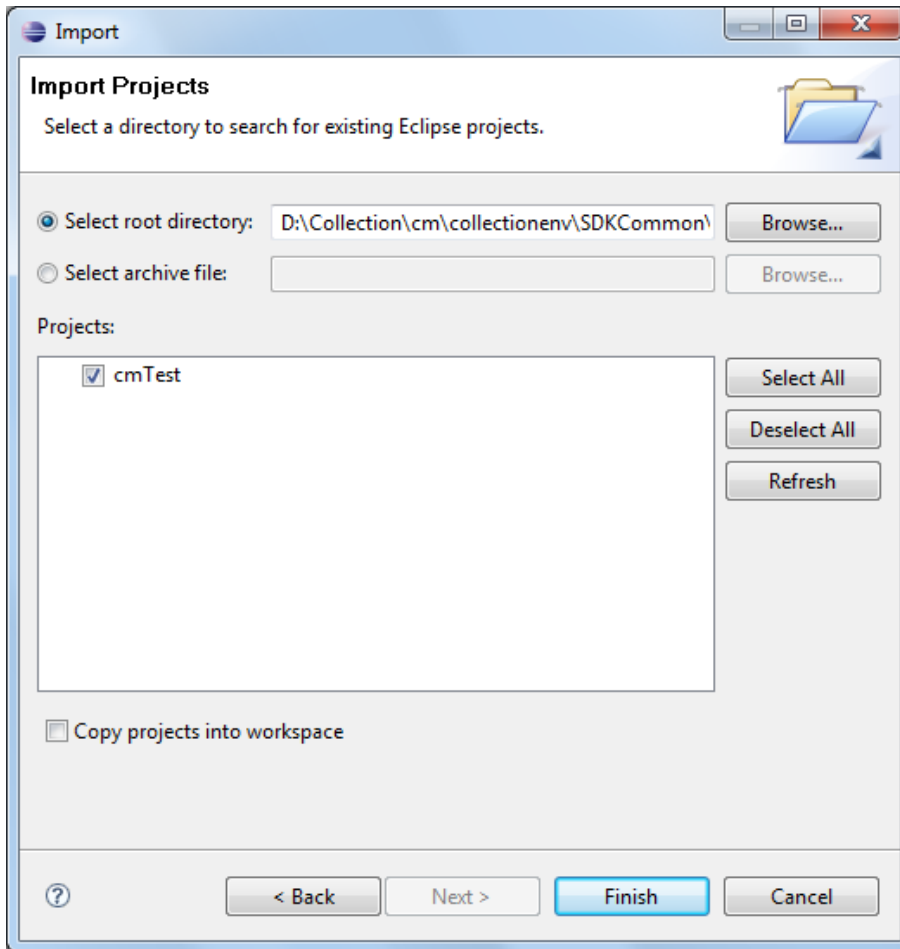


3. Click **Next**.
4. In the **Browse For Folder**, select **eclipseTestProject**.
You can locate the eclipseTestproject at:
{Collection Environment Directory}\SDKCommon\eclipseTestProject

Figure 2–40 Select *eclipseTestProject*

5. In the **Import Projects** dialog box, click **Finish**.

Figure 2–41 Import Projects



2.4.11 Troubleshooting JUnit

During execution of JUnit, following possible error scenarios are encountered:

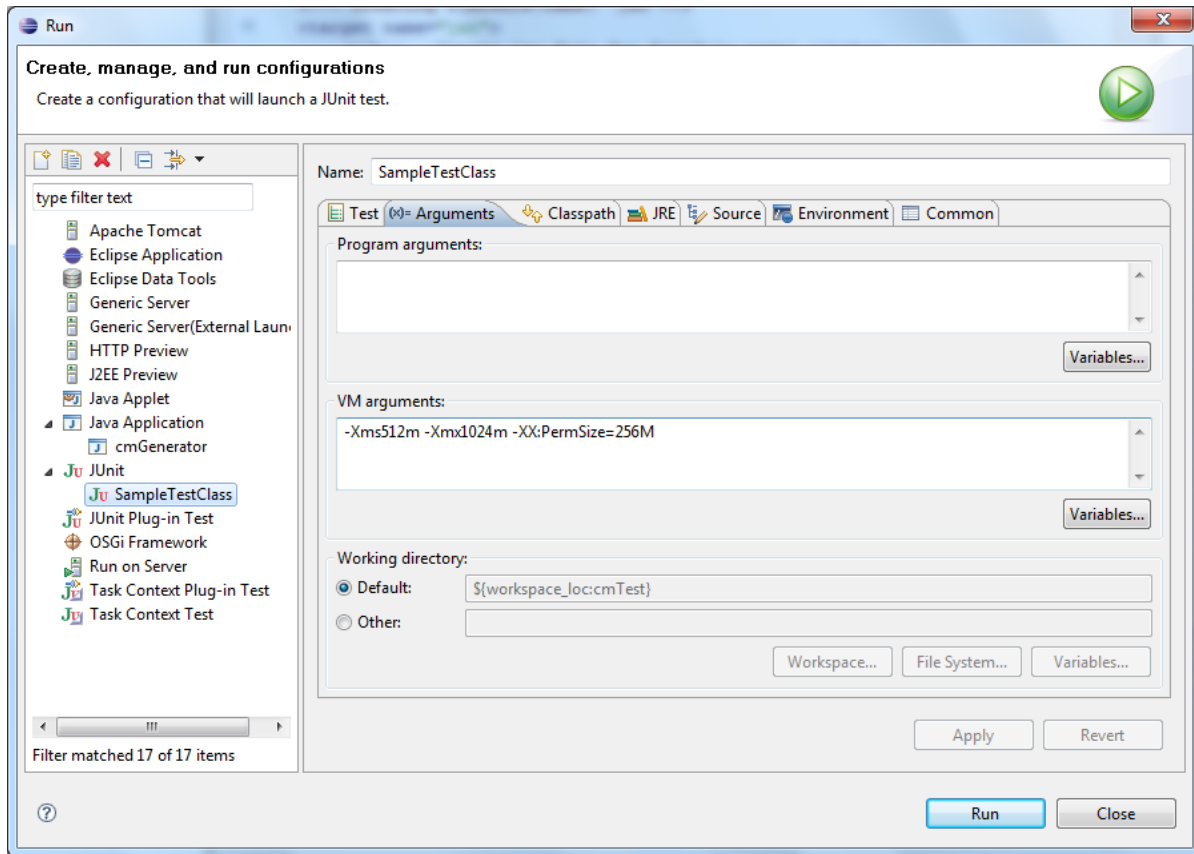
- Out of memory issue

To avoid these scenarios, the following settings need to be performed:

Out of Memory Issue

To address the Out of memory issue, set the VM arguments to **-Xms512m -Xmx1024m -XX:PermSize=256M**.

Figure 2–42 VM Arguments



Note

For running JUnit, ensure that you are using 64 bit JDK.
